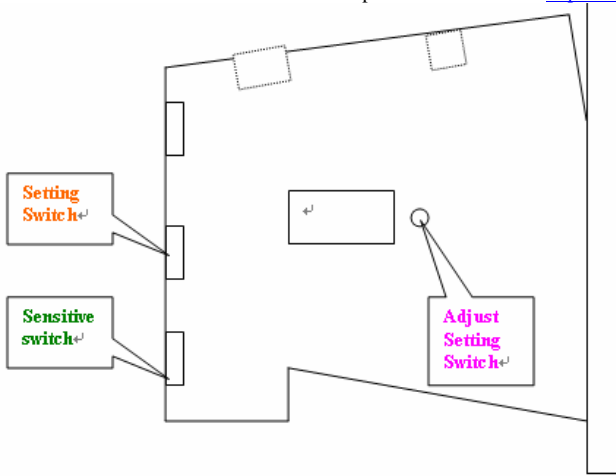




AK5 set up procedures

Please make you computer and AK5 is power off before connect or disconnect the AK5's RS232 Interface to your computer!! For best result please power it up for 15 minutes before usage

More Detail sees the Weavefuture Coin Acceptor AK5 Manual on <http://www.weavefuture.com/pdf/WeavefutureCoinAcceptorAK5-2.pdf>



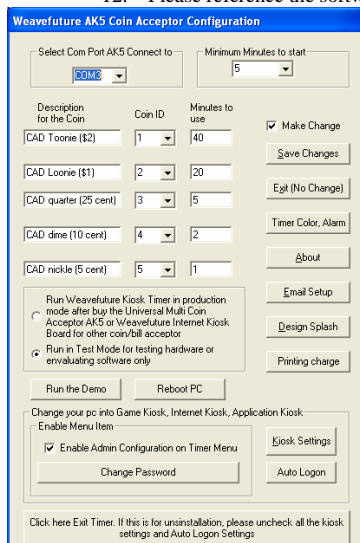
Power adaptor

output 12VDC adaptor (around 500mA)

Example B : Setup for Canadian Nickel(0.05), Dime (0.10), Quarter(0.25), Loony(\$1.00), Toony (\$2.00) output pulse only up to 0.25.

1. Clear all the settings. Following above steps 1 and 3 to erase previous settings.
2. Prepare 10 Canadian Nickels, 10 Canadian Dimes, 10 Canadian Quarters, 10 Loonies, 10 Toonies.
3. Turn the **Sensitive Switch** to **NOM**
4. Turn the **Setting Switch** to **SET** going to Programming mode, the display will show "00"
5. press **Adjust Setting Switch** once, the display will show "01" which stands for **Coin ID= 1** in PC, drop the 10 nickels in sequence, when drop the 10th nickels, the display will show "F" means the setting is done.(if press more time accidentally, for example the display show "01" or "02", then turn the **Setting Switch** to **START**, then turn **Setting Switch** to **SET** again the display will show "00".)
6. press **Adjust Setting Switch** once, the display will show "02" which stands for **Coin ID= 2** in PC, drop the 10 Dimes in sequence, when drop the 10th Dime, the display will show "F" means the setting is done
7. press **Adjust Setting Switch** once, the display will show "03" which stands for **Coin ID=3** in PC, drop the 10 quarters in sequence, when drop the 10th quarter, the display will show "F" means the setting is done.
8. Press **Adjust Setting Switch** 3 times until the display show "04" which stands for **Coin ID= 4** in PC, drop the 10 Loonies in sequence, when drop the 10th Loonies, the display will show "F" means the setting is done.
9. Press **Adjust Setting Switch** 4 times until the display show "05" which stands for **Coin ID= 5** in PC, drop the 10 Toonies in sequence, when drop the 10th Toonies, the display will show "F" means the setting is done.
10. Turn **Setting Switch** to **START**, then your AK5 is ready to use.
11. When drop 1 nickels, it will send to PC as **Coin ID= 1**; drop 1 Dime, it will send to PC as **Coin ID= 2**; drop 1 quarter, it will send to PC as **Coin ID=3**; drop 1 Loony it will send to PC as **Coin ID= 4**; drop 1 Toony it will send to PC as **Coin ID= 5**;
12. Please reference the software Weavefuture Coin Acceptor AK5 Configuration part for detail

1. **Erase the previous all coin ID values setting**
 - Turn the **Sensitive switch** to "NOM" position
 - Turn the **setting switch** to the "SET" position enter programming mode, LED display "00"
 - Keep press the **Adjust Setting Switch** 5 seconds or more until hear a "Beep" sound and LED display "C", means all the coin value setting is erased
 - Turn the **setting switch** to the "START" position exit programming mode
 2. **Set coin ID values**
 - Turn the **Sensitive switch** to the "NOM" position
 - Turn the **Setting Switch** to the "SET" position enter programming mode, LED display "00"
 - Press the **Adjust Setting Switch** to adjust the coin value in turn and let the LED display the desirable Coin ID value, for example "01" or "02". The value increase 1 upon 1 press. If the desirable value passed, just turn the **setting switch** to "START" then turn back to "SET" again the LED will display "00", the value can be selected again.
 - Deposit the coins in turn, can program up to 10 coins .If less than 10 coins can add and store later. For example can prepare 10 quarters as different condition as possible. Or can deposit 10 same or different tokens.
 - Repeat above two steps to set other coin ID values.
- Turn the **setting switch** to the "START" position to exit programming mode



1	INSTALLATION SOFTWARE PROCEDURE.....
1.1	Check you PC' Com port availability.....
1.2	Install the software.....
1.3	Configure the Weavefuture Coin Acceptor Driver and Usage of PC.....
1.4	Reboot the PC.....

Bring up the Weavefuture AK5 Coin Acceptor Configuration Windows to configure the minutes to use relate to Coin ID after finish installation

The Com port is default COM1.

Coin ID is 1,2,3,4,5 have to match with the hardware Coin Acceptor AK5's configuration, detail see 2.5 example of Canadian Nickel(0.05), Dime (0.10), Quarter(0.25), Loony(\$1.00), Toony (\$2.00) match the Coin ID configured in AK5 as Coin ID 1, 2, 3, 4,5 respect.

Important: Program will start default to run "Weavefuture Kiosk Timer Test", which will not lock the screen and special keys.

After finish test for coin acceptor successfully, then you can select "RUN Weavefuture Kiosk Timer" and save the change.



AK5-USB need install extra USB-RS232 driver, which will create a new com port for your PC. It is only recommended if your PC does not have RS232 Com port. The driver is only tested in Windows 2000/XP. If you have tested on other Windows OS, please let us know.

How to install the USB-RS232 driver:

1. [download the software, AK5-USB-RS232-Driver](#)

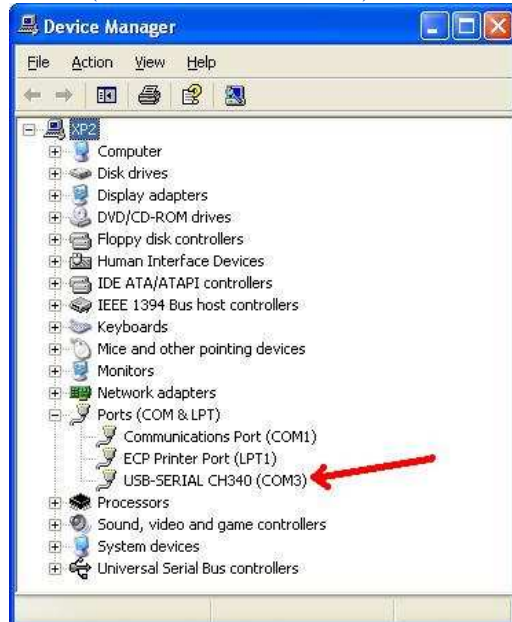


2. Extract it and run it

3. Plug the AK5-USB's USB cable into your PC, The PC will pop up a windows to tell you that there is new hardware found, need install driver, you just follow the default installation to install the driver. (some PC do not need this)

4. Reboot the PC.

5. Check your new com port. Start->Control Panel->System->Hardware->Device Manger



6. Then your PC is ready to install our software Weavefuture Coin Op Internet Cafe Game Kiosk Timer software. Please make sure you change the com port from com1 to new RS232 Serial Port "COM3" in this case after you install the Timer Software

